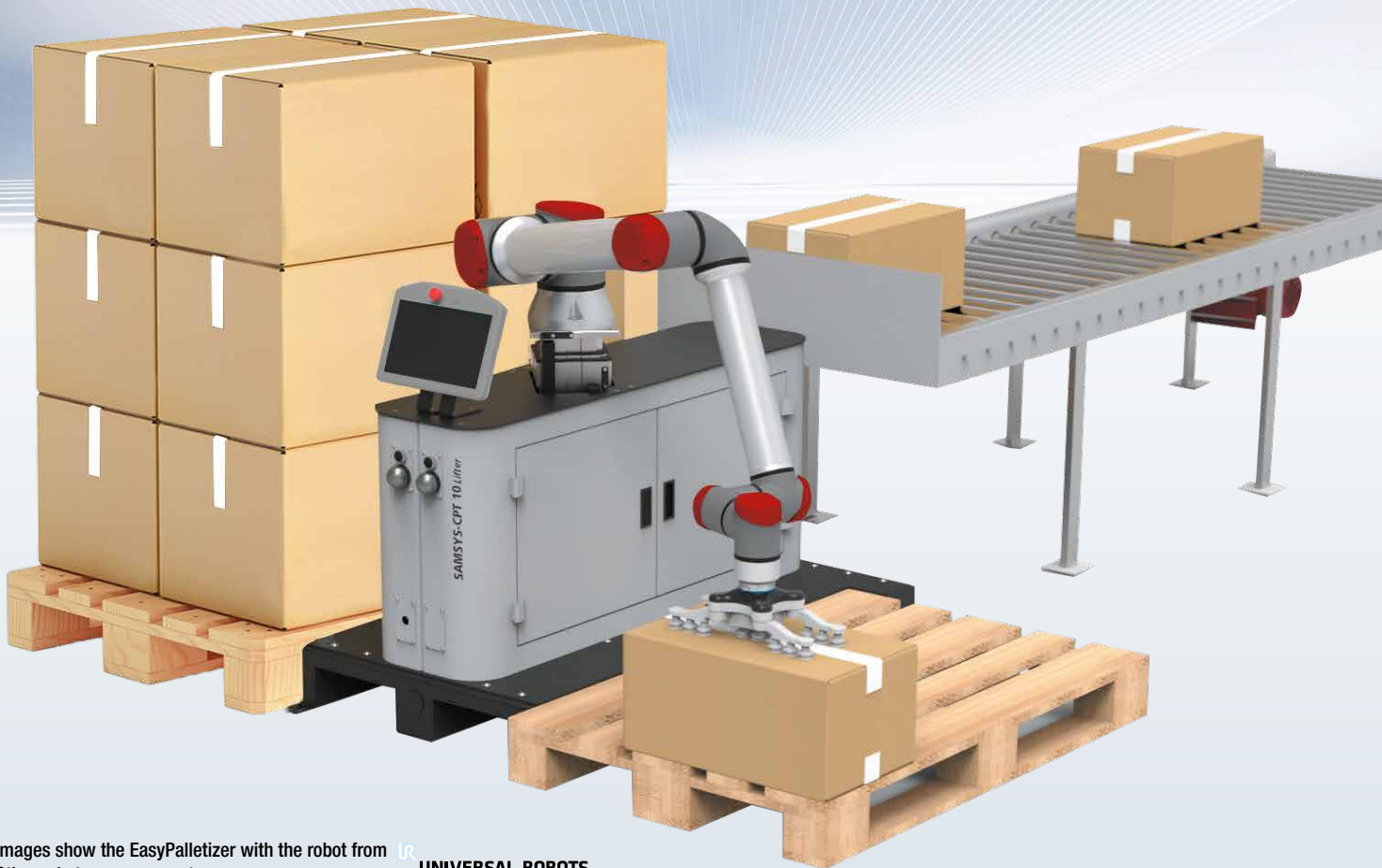



The Samsys **Easy**Palletizer

The mobile and multifunctional palletizing robot



Images show the EasyPalletizer with the robot from  UNIVERSAL ROBOTS
Other robots upon request.

The EasyPalletizer is a mobile palletizing robot that is easy to program and operate. It can be equipped with a robotarm from several manufacturers. The EasyPalletizer consists of a Europallet sized console consisting of compartment for: robot controller, cables, hosts and lifting module. The Easy Palletizer is designed solid with 300 KG of total weight without robot and lifter mounted. It is available in 3 versions depending on the height of the load: **With lift module, with fixed base (height 855 mm) or without base.**

Each side of the EasyPalletizer consists of a docking system for pallets that measure the placement of the pallets. For that it uses 4 pressure sensors on each side. Once all pallets have been placed correctly, palletising begins.

The EasyPalletizer is multifunctional:

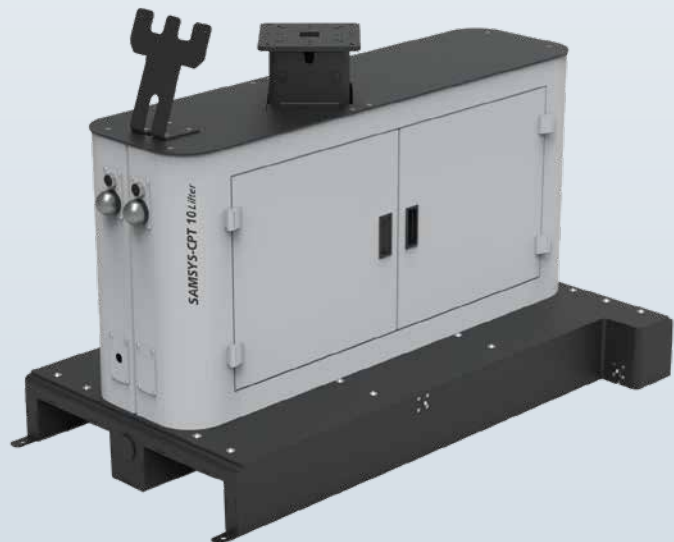
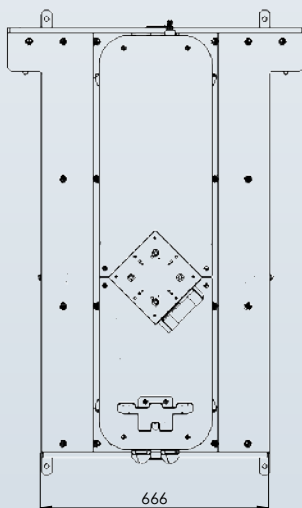
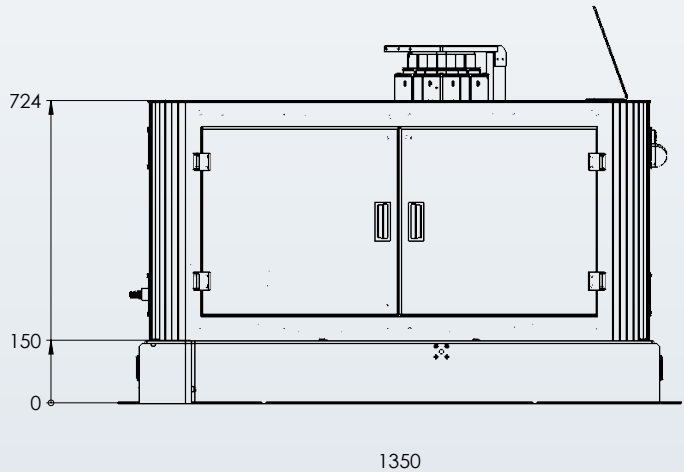
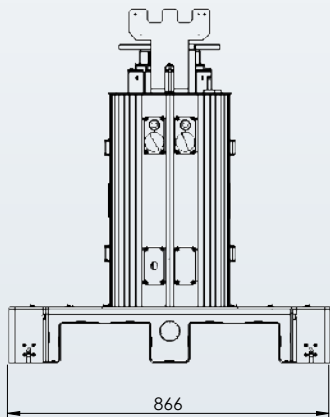
- ▶ Floor level palletizing.
- ▶ Unload/load transfer systems.
- ▶ Dual palletizing system (2 pallets simultaneously)

Advantages

- ▶ Precision and operation speed.
- ▶ Flexibility for manufacturing.
- ▶ Moving packaged units much easier, safer and less labor intensive.
- ▶ Movable palletizing cell with fast mechanical setup with a pallet jack.

The Samsys
EasyPalletizer

Technical data



Product overview		
PT1001	Palletizer	For 2 Pallets with 4 sensor and 2 led lights. L1350 x W866 x H655
PT1002	Palletizer	For 2 Pallets with 4 sensor and 2 led lights with Liftingkit (not mounted). L1350 x W866 x H855
PT1003	Palletizer	For 2 Pallets with 4 sensor and 2 led lights with fixed Pedestal (not mounted). L1350 x W866 x H855



Samsys GmbH
 Obere Schanzenstr. 1-7 | 55232 Alzey / GERMANY
 Phone: +49 6731 998 995 0 | Fax: +49 6731 548 796 4
www.samsys.eu

SAMSYS⁺
 Innovative. Intelligent. Precise.